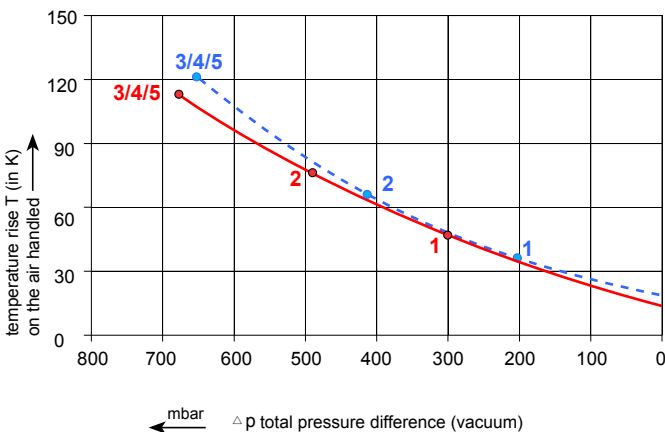
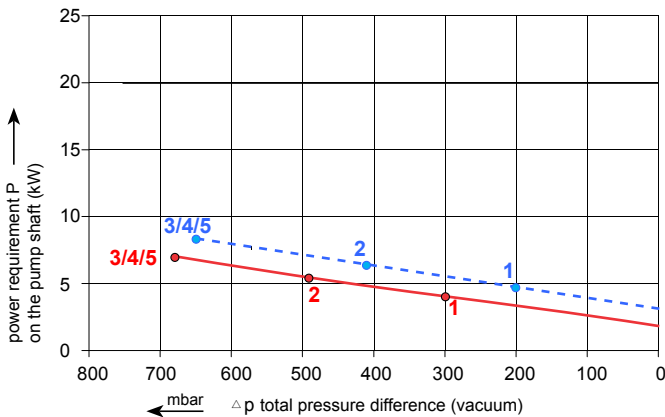
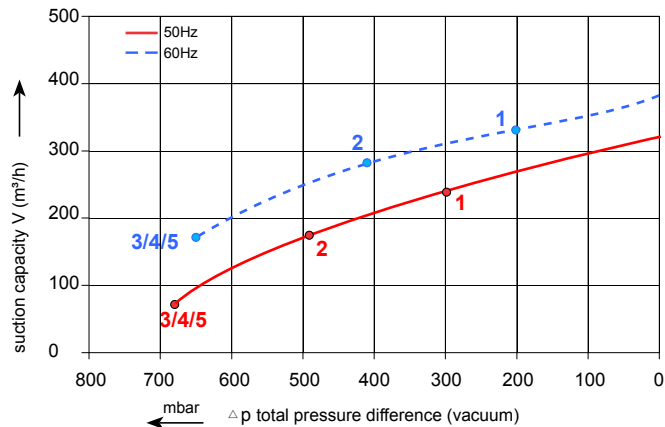


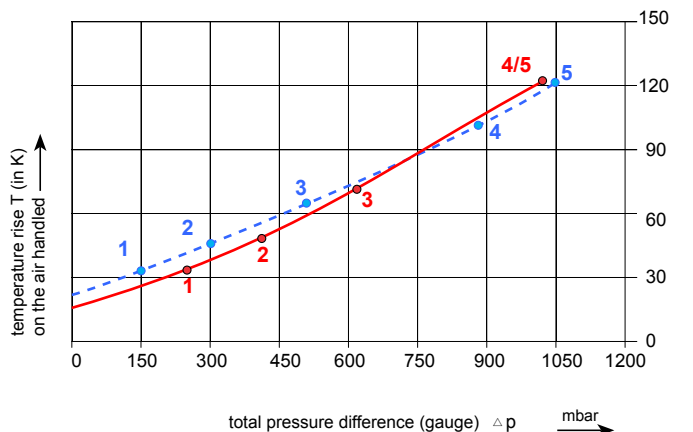
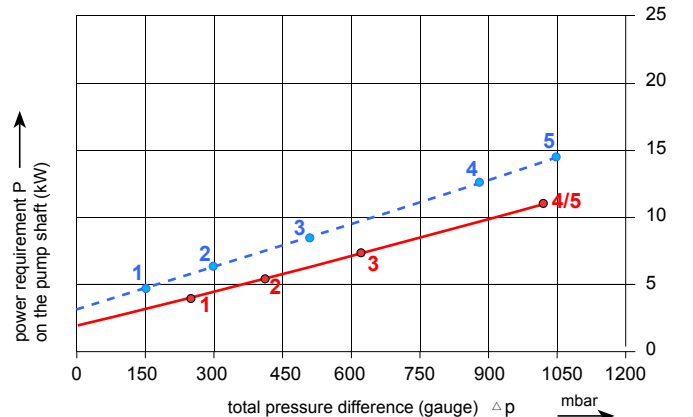
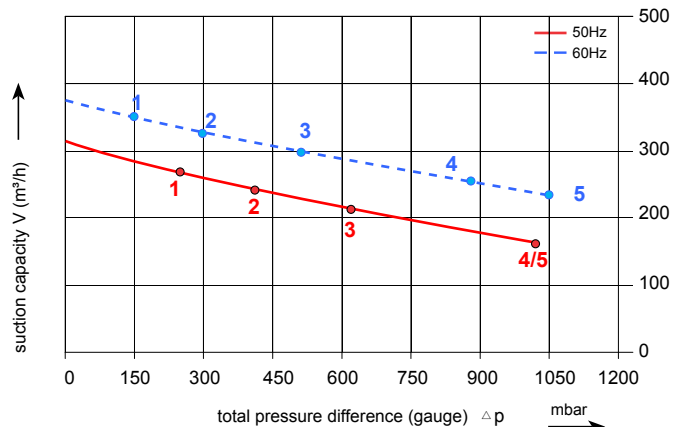
## Data sheet 3RB 350-3

Side channel blower with IE2-motors

Performance curve for Vacuum pump



Performance curve for Compressor



The performance curves are based on air at a temperature of 15 °C and atmospheric pressure of 1013 mbar with a tolerance of +/- 10 %. The total pressure differences are valid for suction and ambient temperatures up to 25 °C. For other conditions please confer with us.

Each G-3RB type can be applied both as vacuum pump and compressor in continuous operation over the total stated performance curve range. The motors are available as standard for the input voltage range of 50 and 60 Hz and for protection category IP 55.

## Selection and ordering data

### Type 3RB350-3

Curve No.	Order No.	Fre- quency	Rated Power	Input voltage	Input current	Permissible total differential pressure <sup>2)</sup>		Sound pressure level <sup>3)</sup>	Weight ca.
		Hz	KW	V	A	Vacuum mbar	Compressor mbar	dB(A)	kg
<b>3~ 50/60 Hz IP55 isolation material class F</b>									
1	3RB 350-3AAT37	50	4.0	350-450 $\Delta$ /610-725Y	8.4 $\Delta$ /4.8Y	-300	250	69	118
		60	4.6	400-500 $\Delta$ /690-725Y	8.2 $\Delta$ /4.7Y	-200	150	72	
2	3RB 350-3AAT47	50	5.5	350-450 $\Delta$ /610-725Y	11.1 $\Delta$ /6.4Y	-490	410	70	118
		60	6.3	400-500 $\Delta$ /690-725Y	11.0 $\Delta$ /6.4Y	-410	300	74	
3	3RB 350-3AAT57	50	7.5	350-450 $\Delta$ /610-725Y	15.0 $\Delta$ /8.7Y	-680	620	70	126
		60	8.6	400-500 $\Delta$ /690-725Y	15.1 $\Delta$ /8.8Y	-650	510	74	
4	3RB 350-3AAT67	50	11.0	350-450 $\Delta$ /610-725Y	22.0 $\Delta$ /12.7Y	-680	1020	72	151
		60	12.6	400-500 $\Delta$ /690-725Y	22.0 $\Delta$ /12.9Y	-650	880	76	
5	3RB 350-3AAT77	50	15.0	350-450 $\Delta$ /610-725Y	30.5 $\Delta$ /17.3Y	-680	1020	70	162
		60	17.3	400-500 $\Delta$ /690-725Y	29.5 $\Delta$ /17.0Y	-650	1050	74	

1) Relief valves available for limiting differential pressure.

2) Measuring surface sound pressure level acc. to EN ISO 3744, measured with an equivalent unit at a distance of 1 m. The pump is throttled to an average suction pressure, with piping connected, but no relief valves fitted, tolerance  $\pm 3$  dB(A).

All 3RB fulfil the 2006/42/EC(machinery)and 2006/95/EC(low voltage) directives and the EN 60034-1 norm "Rotating electrical machines".

The motors comply with EN 60 034-1 / -2 /-30(IEC 60034) and thermal class F

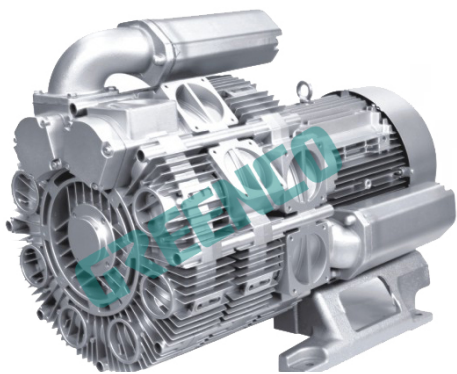
The voltage tolerance is +/- 5%.

The frequency tolerance is +/- 2% maximum.

### Other voltage ranges

50 Hz	50 Hz Voltage range	60 Hz Voltage range	86 Hz(5000 rpm)	100 Hz(6000 rpm)	3RB... <input type="checkbox"/>	<input type="checkbox"/>
3 IE2/						
200 V D/345 V Y 500 V Y 230 V D/400 V Y 400 V D/690 V Y	180-240 V D /310-415 V Y 450-550 V Y 200-260 V D /350-450 V Y 350-450 V D /610-725 V Y	200...275 V D/345...480 V Y 520...600 V Y 230...290 V D/400...500 V Y 400...500 V D/690...725 V Y	----- ----- 400 V D -----	400 V D ----- ----- -----	T T T T	1 3 6 7

3) Performance can different if standard motors are used. Please refer to corresponding data sheets.



Changes in particular of the quoted performance curve, data and weights may occur without prior notice. The data given do not constitute an obligation from our side to deliver as shown.

**GREENCO**®

Your Ultimate Source for Vacuum and Pressure

**ZHEJIANG GREENCO INDUSTRY CO LTD**  
 Rongshi Road Danya Industrial Zone Zeguo  
 Town Wenling 317523 China  
 Tel.: +86-576-86428999  
 Fax: +86-576-86409555  
 www.greenco.cn  
 E-mail: greenco@greenco.cn