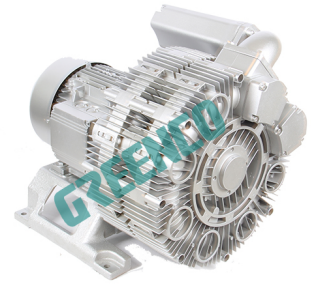


Data sheet 3RB 350-2

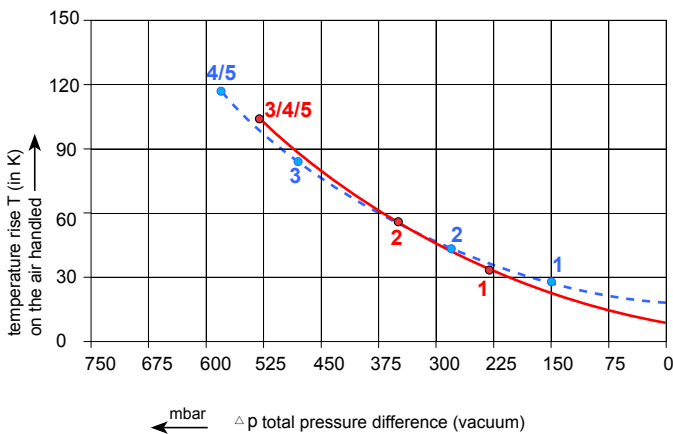
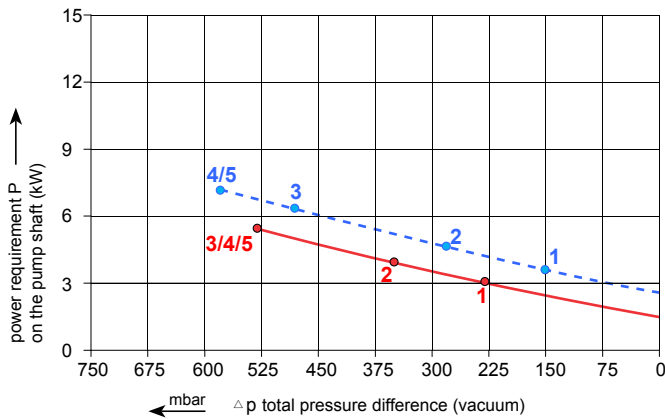
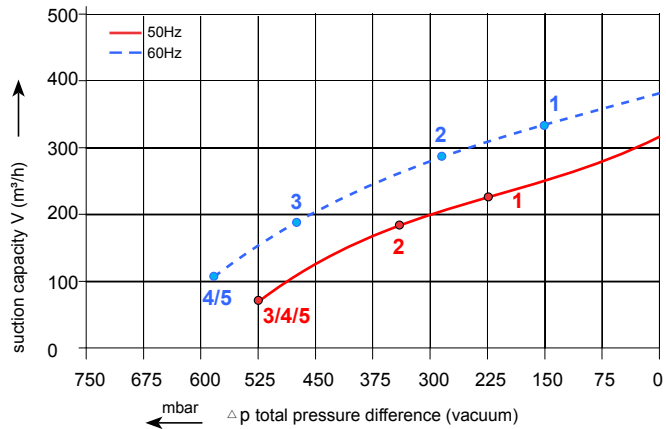
Side channel blower with IE2-motors

IE2

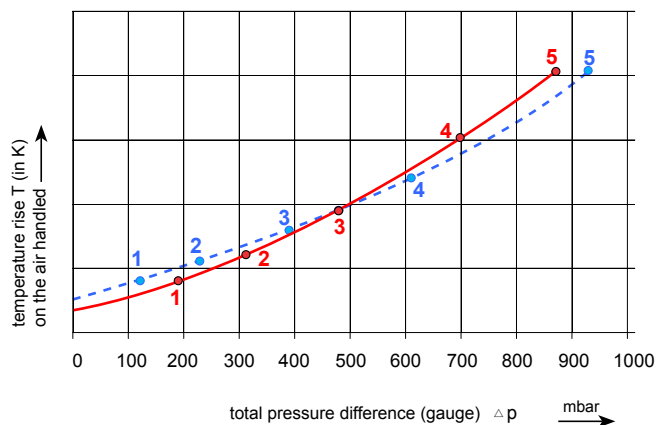
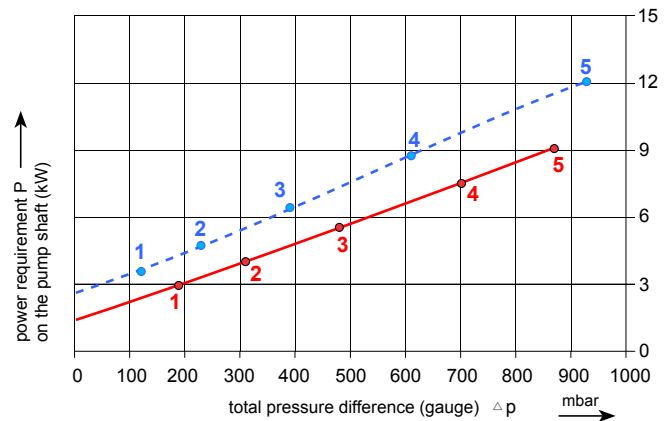
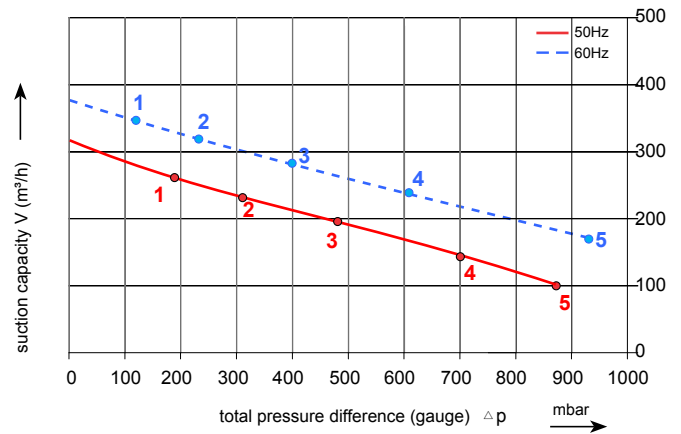
C[®] AU US



Performance curve for Vacuum pump



Performance curve for Compressor



The performance curves are based on air at a temperature of 15 °C and atmospheric pressure of 1013 mbar with a tolerance of +/- 10 %. The total pressure differences are valid for suction and ambient temperatures up to 25 °C. For other conditions please confer with us.

Each G-3RB type can be applied both as vacuum pump and compressor in continuous operation over the total stated performance curve range. The motors are available as standard for the input voltage range of 50 and 60 Hz and for protection category IP 55.

Selection and ordering data

Type 3RB350-2

Curve No.	Order No.	Frequency	Rated Power	Input voltage		Input current		Permissible total differential pressure ²⁾		Sound pressure level ³⁾	Weight ca.
				Hz	KW	V	A	Vacuum mbar	Compressor mbar		
3~ 50/60 Hz IP55 insulation material class F											
1	3RB 350-2AAT26	50	3.0	200-260 Δ /350-450Y		11.4 Δ /6.5Y		-230	190	68	78
		60	3.45	230-290 Δ /400-500Y		10.8 Δ /6.2Y		-150	120	71	
2	3RB 350-2AAT37	50	4.0	350-450 Δ /610-725Y		8.4 Δ /4.8Y		-350	310	69	92
		60	4.6	400-500 Δ /690-725Y		8.2 Δ /4.7Y		-280	230	72	
3	3RB 350-2AAT47	50	5.5	350-450 Δ /610-725Y		11.1 Δ /6.4Y		-530	480	69	100
		60	6.3	400-500 Δ /690-725Y		11.0 Δ /6.4Y		-480	390	73	
4	3RB 350-2AAT57	50	7.5	350-450 Δ /610-725Y		15.0 Δ /8.7Y		-530	700	69	126
		60	8.6	400-500 Δ /690-725Y		15.1 Δ /8.8Y		-580	610	73	
5	3RB 350-2AAT67	50	11	350-450 Δ /610-725Y		22.0 Δ /12.7Y		-530	870	72	132
		60	12.6	400-500 Δ /690-725Y		22.0 Δ /12.9Y		-580	930	76	

1) Relief valves available for limiting differential pressure.

2) Measuring surface sound pressure level acc. to EN ISO 3744, measured with an equivalent unit at a distance of 1 m. The pump is throttled to an average suction pressure, with piping connected, but no relief valves fitted, tolerance ±3 dB(A).

All 3RB fulfil the 2006/42/EC(machinery)and 2006/95/EC(low voltage) directives and the EN 60034-1 norm "Rotating electrical machines".

The motors comply with EN 60 034-1 / -2 /-30(IEC 60034) and thermal class F

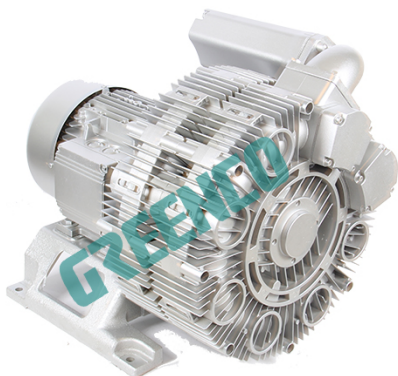
The voltage tolerance is +/- 5%.

The frequency tolerance is +/- 2% maximum.

Other voltage ranges

50 Hz	50 Hz Voltage range	60 Hz Voltage range	86 Hz(5000 rpm)	100 Hz(6000 rpm)	3RB...	<input type="checkbox"/>	<input type="checkbox"/>
3 IE2/							
200 V D/345 V Y 500 V Y 230 V D/400 V Y 400 V D/690 V Y	180-240 V D /310-415 V Y 450-550 V Y 200-260 V D /350-450 V Y 350-450 V D /610-725 V Y	200...275 V D/345...480 V Y 520...600 V Y 230...290 V D/400...500 V Y 400...500 V D/690...725 V Y	----- ----- 400 V D -----	400 V D ----- ----- -----		T T T T	1 3 6 7

3) Performance can different if standard motors are used. Please refer to corresponding data sheets.



Changes in particular of the quoted performance curve, data and weights may occur without prior notice. The data given do not constitute an obligation from our side to deliver as shown.

GREENCO®

Your Ultimate Source for Vacuum and Pressure

ZHEJIANG GREENCO INDUSTRY CO LTD
 Rongshi Road Danya Industrial Zone Zeguo
 Town Wenling 317523 China
 Tel.: +86-576-86428999
 Fax: +86-576-86409555
 www.greenco.cn
 E-mail: greenco@greenco.cn