



GREENCO

Data sheet side channel blowers

Series G-2RB



Side channel blowers

Single-phase current 50/60 Hz

Vacuum operation

Types 2RB 210 to 2RB 710

Power range:

output:

Total pressure difference:

Suction capacity:

0,37 to 2,55 kW
to $\Delta p=280$ mbar(P)
80 to 380 m³/h

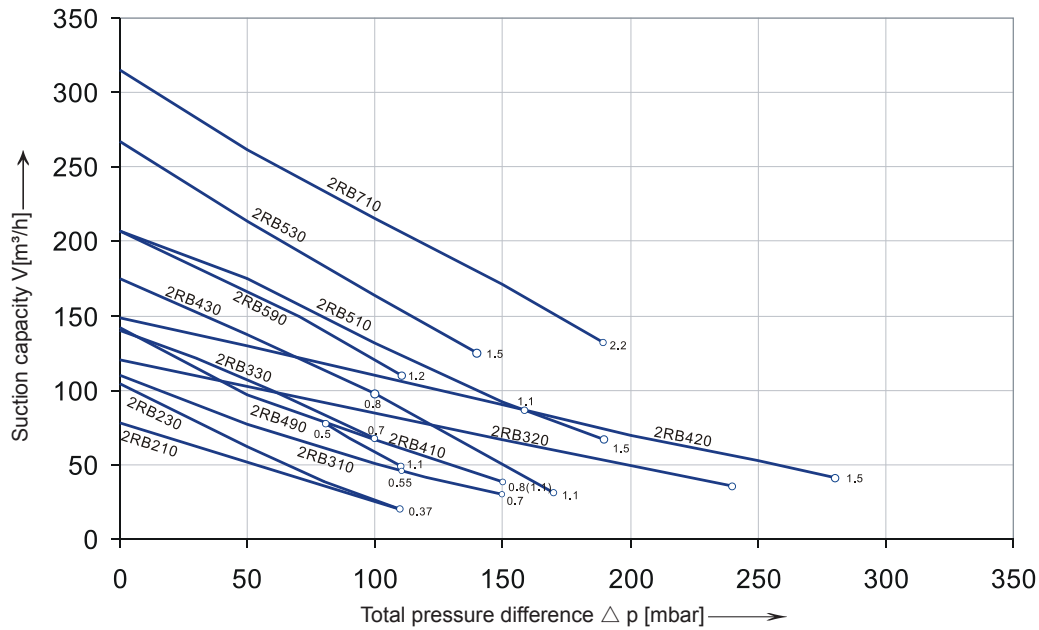


Selection and ordering data

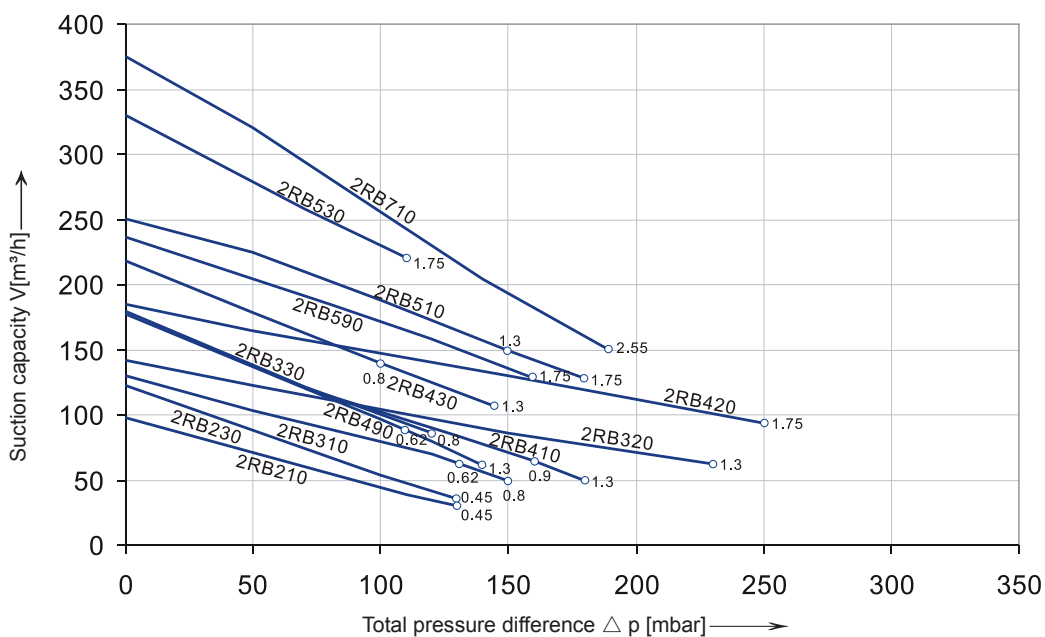
Order No.	Motor(IP55)				Weight approx.	Sound-pressure level
	Fre- quency	output	voltage	current		
	Hz	kW	V	A	kg	dB(A)
2RB 210-7AA11	50	0.37	230	2.7	11	53
	60	0.45	230	3.0		56
2RB 210-7AV15	50	0.37	115/230	5.4/2.7	11	53
	60	0.45	115/230	6.0/3.0		56
2RB 230-7AA11	50	0.37	230	2.7	11	54
	60	0.45	230	3.0		57
2RB 230-7AV15	50	0.37	115/230	5.4/2.7	11	54
	60	0.45	115/230	6.0/3.0		57
2RB 310-7AA01	50	0.55	230	3.7	13	55
	60	0.62	230	4.5		57
2RB 310-7AA11	50	0.7	230	4.8	14	55
	60	0.8	230	4.1		57
2RB 320-7HA31	50	1.1	230	7.3	17	58
	60	1.3	230	8.3		60
2RB 330-7AA11	50	0.7	230	4.8	14	58
	60	0.8	230	4.1		60
2RB 410-7AA11	50	0.8	230	5.2	15	63
	60	0.9	230	5.8		64
2RB 410-7AA21	50	1.1	230	7.3	16	63
	60	1.3	230	8.3		64
2RB 410-7AV25	50	1.1	115/230	14.6/7.3	16	63
	60	1.3	115/230	16.6/8.3		64
2RB 420-7HA31	50	1.5	230	9	26	66
	60	1.75	230	10		69
2RB 420-7AV45	50	1.5	115/230	22/11	27	66
	60	1.75	115/230	24/12		69
2RB 430-7AA11	50	0.8	230	5.2	16	64
	60	0.9	230	5.8		66
2RB 430-7AA21	50	1.1	230	7.3	17	64
	60	1.3	230	8.3		66
2RB 430-7AV25	50	1.1	115/230	14.6/7.3	16	64
	60	1.3	115/230	16.6/8.3		65
2RB 490-7AA11	50	0.5	230	4.1	16	63
2RB 490-7AB16	60	0.62	115	10	16	64
2RB 490-7AV25	50	1.1	115/230	14.6/7.3	17	63
	60	1.3	115/230	16.6/8.3		64
2RB 510-7AA11	50	1.1	230	7.3	21	64
	60	1.3	230	8.3		70
2RB 510-7AA21	50	1.5	230	9	24	64
	60	1.75	230	10		70

2RB 530-7AA21	50	1.5	230	9	26	65
	60	1.75	230	10		71
2RB 530-7AV35	50	1.5	115/230	22.0/11.0	26	65
	60	1.75	115/230	24.0/12.0		71
2RB 590-7AA21	50	1.2	230	7.9	21	64
2RB 590-7AB26	60	1.75	115	21.5	21	70
2RB 710-7AA11	50	2.2	230	12.8	30	72
	60	2.55	230	12.8		74

50 Hz Selection diagram

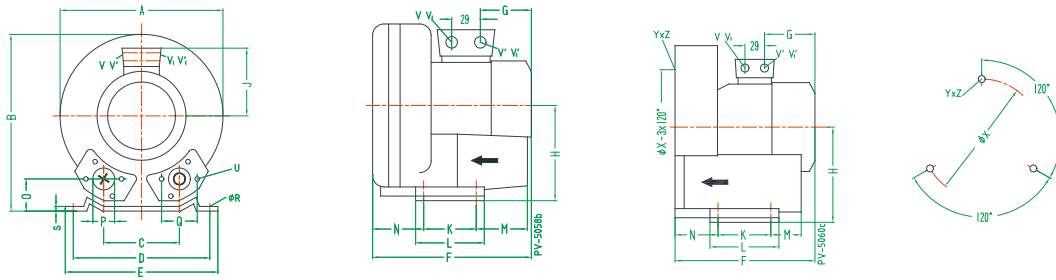


60 Hz Selection diagram



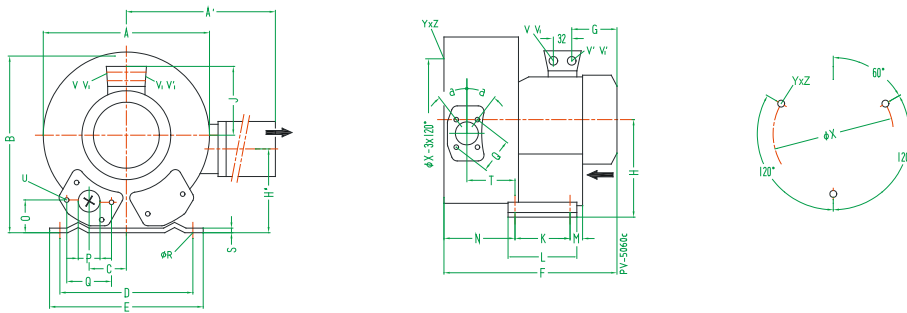
Dimensions [mm]

2RB 210
2RB 230
2RB 310
2RB 330



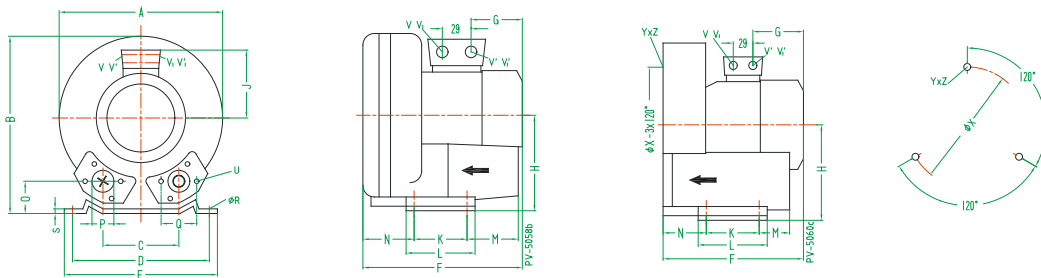
Type	Phases	Phases															P	Q	ØR	S	U	V(t+)	V'(t+)	V(t-)	V'(t-)	YxZ	X-Holes		
		A	B	C	D	E	F	G	H	J	K	L	M	N	O	ØX											YxZ		
2RB 210-7AV15	1~	246	247	90	205	230	256	135	128	111	83	108	75	71	39	G1¼(15left-deep)	64	10	2.5	M6x17	M16x1.5	M25x1.5	-	-	-	-	M6x15	0°/120°/240°	140
2RB 210-7AA11	1~																			M16x1.5	M25x1.5	-	-	-	-				
2RB 230-7AV15	1~						267	135		111										M16x1.5	M25x1.5	M25x1.5	M16x1.5	M16x1.5					
2RB 230-7AA11	1~																												
2RB 310-7AA01	1~	268	272	93			260													M25x1.5	M16x1.5	-	-	-	-				
2RB 310-7AA11	1~																												
2RB 330-7AA11	1~						276													M25x1.5	M16x1.5	M25x1.5	M16x1.5						

2RB 320
2RB 420



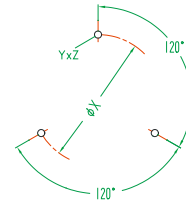
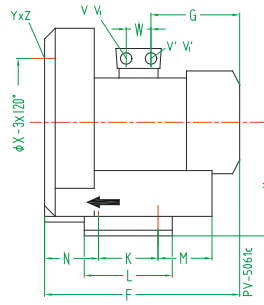
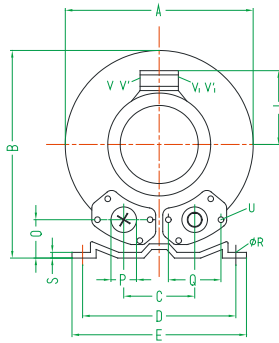
Type	Phases	Phases															P	Q	ØR	S	T	U	V(t+)	V'(t+)	V(t-)	V'(t-)	α	ØX	YxZ	X-Holes	
		A	A'	B	C	D	E	F	G	H	H'	J	K	L	M	N														O	ØX
2RB 320-7HA31	1~	293	324	286	47	205	230	354	160	141	114	120	83	108	82	138	41	G1¼(15left-deep)	64	10	2.5	92	M6x17	M25x1.5	M16x1.5	-	-	27°	160	M6x15	51°/171°/291°
2RB 420-7HA31	1~	322	324	315	58	225	255	401	191	154	153	128	95	130	73	151	48	G1¼(15left-deep)	72	12	3	104	M6x19	M16x1.5	M25x1.5	-	-	28°	174		
2RB 420-7AV45	1~																														

2RB 410
2RB 430
2RB 490



Type	Phases	Phases															P	Q	ØR	S	U	V(t+)	V'(t+)	V(t-)	V'(t-)	YxZ	X-Holes						
		A	B	C	D	E	F	G	H	J	K	L	M	N	O	ØX											YxZ						
2RB 410-7AA11	1~	286	302	115	225	255	294	160	154	120	95	130	70	75	46	G1¼(15left-deep)	72	12	3	M6x19	M16x1.5	M25x1.5	-	-	-	-	M6x15	0°/120°/240°	174				
2RB 410-7AA21	1~																																
2RB 410-7AV25	1~																																
2RB 430-7AA11	1~						311																										
2RB 430-7AA21	1~																																
2RB 430-7AV25	1~																																
2RB 490-7AA11	1~						269	135		111																							
2RB 490-7AB16	1~																																
2RB 490-7AV25	1~						311	160		120																							

2RB 510
 2RB 530
 2RB 590
 2RB 710



Type	Phases																				X-Holes							
		A	B	C	D	E	F	G	H	J	K	L	M	N	O	øP	Q	øR	S	U	V ₁₋₄	V ₁₋₄	V ₁₋₄	V ₁₋₄	YxZ	øX	W	
2RB 510-7AA11	1~	334	337	120	260	295	314	160	175	120	115	155	96	87	48	55	83	14	4	M8x17	M16x1.5	M25x1.5	-	-	M8x20	0°/120°/240°	200	29
2RB 510-7AA21	1~						345	191		128																		
2RB 510-7AV35	1~																											
2RB 530-7AA11	1~						334	160		120											M16x1.5	M25x1.5	-	-				
2RB 530-7AA21	1~						365	191		128																		
2RB 530-7AV35	1~																				M16x1.5	M25x1.5	-	-				
2RB 590-7AA21	1~																											
2RB 590-7AB26	1~																											
2RB 710-7AA11	1~	382	384	125	290	325	377		197		140	180	84	109	54	55	83	15	4.5		M25x1.5	M16x1.5	-	-	M10x20		240	29

Performance curves

The performance curves are valid for pumping air at 15 °C at the inlet flanges with an air pressure of 1,013 mbar and a tolerance of ±10%. The total pressure differences are valid up to an intake and ambient temperature of 25 °C.

Retention of validity:

Changes in particular the quoted performance curve, data and weights without prior notice. The figures are without obligations.

Sound pressure level:

Measuring surface sound-pressure level acc. to EN 216801, measured at a distance of 1 m. The pump is throttled to a medium inlet pressure, a hose is connected to the discharge side, and a vacuum-relief valve is not fitted.